



2018

**MTCF**  
Michigan Traffic  
Crash Facts

# Michigan Traffic Crash Facts

## Reporting Criteria

Please pay particular attention to the wording when interpreting the three levels of data gathered for this report.

### Crash

The Crash Level analyzes data related to crash events and returns one result per crash.

Examples: Time, weather, and location.

### Units

The Units Level analyzes the experience of the units in the crash and returns one result per vehicle, driver, pedestrian, bicyclist, or train.

Examples: Vehicle type, driver condition, and unit events.

### People

The People Level analyzes the experience of the people involved in the crash and returns one result per occupant/person/party.

Examples: Age, injury severity, and seat belt or helmet use.

### KABCO Injury Indicator:

K = Killed

A = Suspected Serious Injury

B = Suspected Minor Injury

C = Possible Injury

O = No Injury

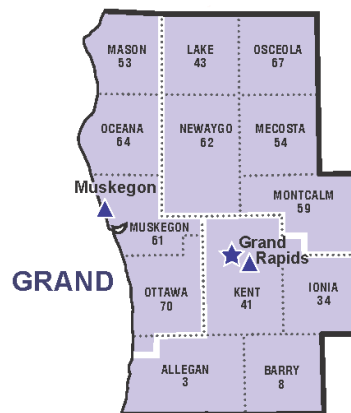
Property Damage Only (PDO)



## MDOT Region - Grand

### 2018 Traffic Crash Data & 2014-2018 5-Year Trends

Beginning October 2015, MDOT Region - Grand is comprised of Allegan, Barry, Ionia, Kent, Lake, Mason, Mecosta, Montcalm, Muskegon, Newaygo, Oceana, Osceola, and Ottawa counties. Trend tables for this report are based on those counties.



### Sources:

The crashes in this report occurred on public roadways in Michigan and resulted in injuries, fatalities, or property damage (with \$1,000 as a reporting threshold). The information was gathered from Michigan Traffic Crash Report Forms (UD-10) submitted by local police departments, sheriff's offices, and the Michigan State Police. Other related information was obtained from the departments of Transportation, State, and Community Health.

This page left intentionally blank

## MDOT Region - Grand Experience

In 2018:

There were 84,515 drivers involved in 51,916 motor vehicle crashes in MDOT Region Grand. Of those crashes, 165 were classified as fatal, resulting in 176 fatalities. An additional 11,689 persons were injured.

MDOT Region Grand experienced the highest number of motor vehicle crashes (5,983) in November, the highest number of fatal crashes (25) and the highest number of persons killed (27) in August.

Michigan driver statistics indicate 6.8 percent of licensed drivers in MDOT Region Grand were age 16-20, and 11.4 percent of drivers in crashes were also in that age group.

### 2018 - Crashes and Injuries by Month

Month	Crashes				Persons	
	Total	Fatal	Injury	Property Damage Only (PDO)	Fatalities	Injuries
January	4,991	12	641	4,338	15	843
February	4,186	9	578	3,599	11	796
March	3,586	6	570	3,010	6	753
April	3,930	13	728	3,189	14	980
May	3,824	18	775	3,031	20	1,070
June	3,961	9	771	3,181	9	1,063
July	3,738	17	742	2,979	18	1,014
August	3,823	25	801	2,997	27	1,152
September	3,935	21	779	3,135	21	1,059
October	5,393	12	823	4,558	12	1,084
November	5,983	9	771	5,203	9	1,013
December	4,566	14	641	3,911	14	862
<b>Total</b>	<b>51,916</b>	<b>165</b>	<b>8,620</b>	<b>43,131</b>	<b>176</b>	<b>11,689</b>

### 2018 - Driver Statistics

Age Group	MDOT Region - Grand			Driver Rates	
	2018 Population	Licensed Drivers	Drivers in Crashes	Per 10k Population	Per 10k Licensed
0 - 15	333,043	9,411	139	4.2	147.7
16 - 20	111,099	78,800	9,634	867.2	1,222.6
21 - 24	90,032	75,854	8,429	936.2	1,111.2
25 - 64	822,075	758,698	51,826	630.4	683.1
65 +	251,665	229,667	8,048	319.8	350.4
Unknown	0	0	6,439	--	--
<b>Total</b>	<b>1,607,914</b>	<b>1,152,430</b>	<b>84,515</b>	<b>525.6</b>	<b>733.4</b>

### 2018 - Vehicles in Crashes

Vehicle Type	Motor Vehicles		Fatal Crashes		Injury Crashes	PDO Crashes
	Number of Vehicles	% of Total	Number	% of Total	Number	Number
Passenger car, SUV, van	69,041	81.7	183	68.3	12,527	56,331
Motor home	266	0.3	1	0.4	50	215
Pickup truck	9,643	11.4	31	11.6	1,689	7,923
Small truck under 10,000 lbs. GVWR	463	0.5	1	0.4	71	391
Motorcycle	509	0.6	27	10.1	379	103
Moped / goped	82	0.1	1	0.4	61	20
Go-cart / golf cart	8	0.0	0	0.0	2	6
Snowmobile	5	0.0	0	0.0	4	1
Off-Road Vehicle - ORV / All-Terrain Vehicle - ATV	41	0.0	2	0.7	33	6
Other	333	0.4	1	0.4	55	277
Truck/bus over 10,000 lbs.	2,403	2.8	19	7.1	417	1,967
Unknown	1,721	2.0	2	0.7	128	1,591
<b>Total</b>	<b>84,515</b>	<b>100.0</b>	<b>268</b>	<b>100.0</b>	<b>15,416</b>	<b>68,831</b>

## 5-Year Trend - Crashes by Month

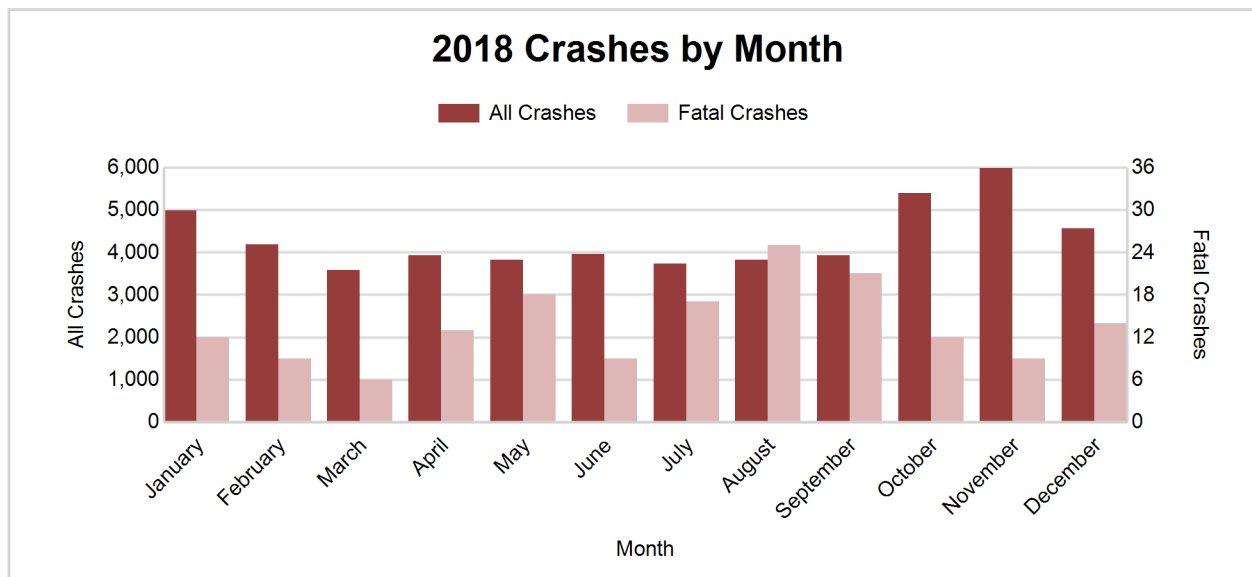
Month	2014		2015		2016		2017		2018	
	Total Crashes	Fatal Crashes	Total Crashes	Fatal Crashes	Total Crashes	Fatal Crashes	Total Crashes	Fatal Crashes	Total Crashes	Fatal Crashes
January	6,470	3	5,166	12	5,084	7	4,878	10	4,991	12
February	5,161	12	4,633	9	3,962	10	3,367	12	4,186	9
March	3,756	11	3,213	9	3,669	6	3,815	17	3,586	6
April	2,558	11	2,760	7	3,418	16	3,309	12	3,930	13
May	3,280	15	3,556	16	3,965	10	3,980	13	3,824	18
June	3,377	12	3,671	11	3,931	15	4,181	17	3,961	9
July	3,137	22	3,580	10	3,611	15	3,797	14	3,738	17
August	3,250	16	3,251	25	3,898	12	3,702	18	3,823	25
September	3,345	14	3,526	10	4,045	19	3,980	19	3,935	21
October	4,479	11	4,805	11	4,849	15	5,338	18	5,393	12
November	6,470	7	4,981	14	5,249	16	5,098	20	5,983	9
December	3,750	8	4,177	15	6,242	11	7,033	11	4,566	14
<b>Total</b>	<b>49,033</b>	<b>142</b>	<b>47,319</b>	<b>149</b>	<b>51,923</b>	<b>152</b>	<b>52,478</b>	<b>181</b>	<b>51,916</b>	<b>165</b>

Note: † Indicates that the highest number of total crashes reported in the 5-year period occurred in the same month

## 5-Year Trend - Crashes by Day of Week

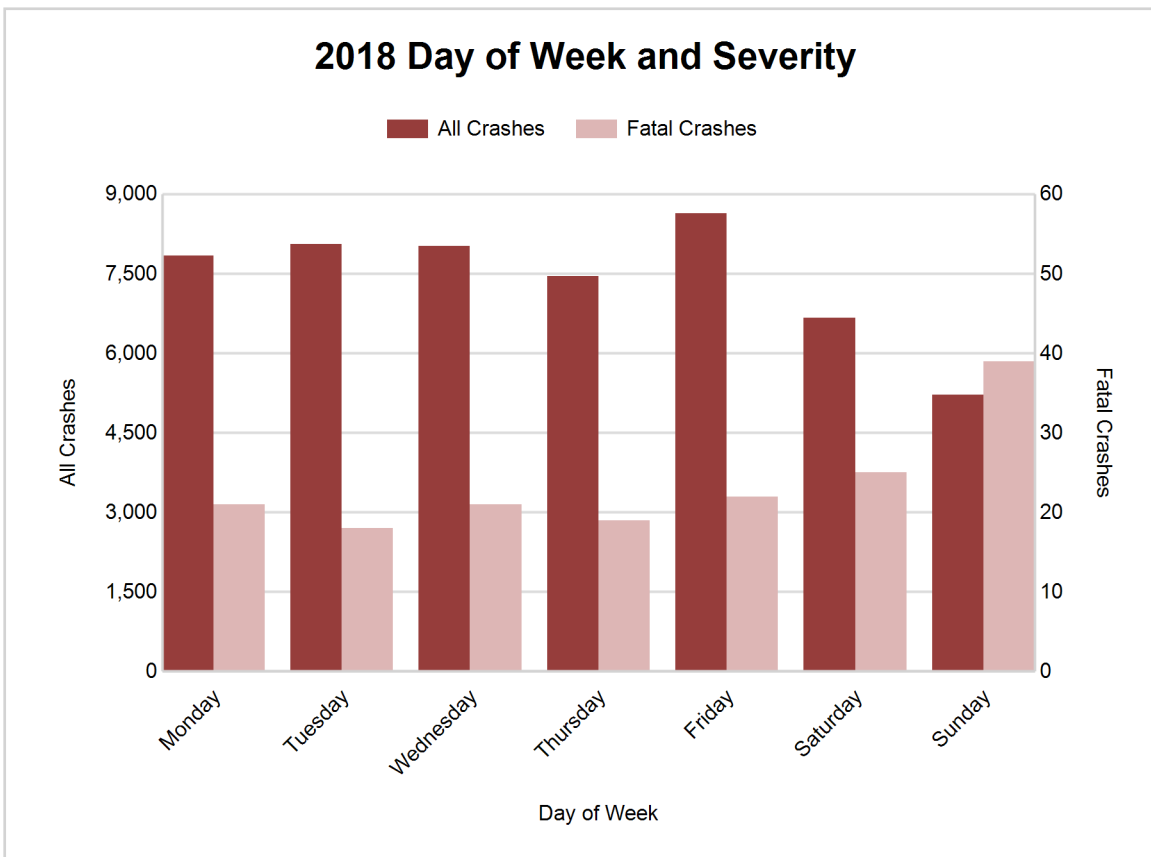
Day	2014		2015		2016		2017		2018	
	Total Crashes	Fatal Crashes	Total Crashes	Fatal Crashes	Total Crashes	Fatal Crashes	Total Crashes	Fatal Crashes	Total Crashes	Fatal Crashes
Monday	6,961	15	6,873	17	7,336	24	7,502	15	7,845	21
Tuesday	7,365	12	7,033	17	7,775	22	7,691	23	8,055	18
Wednesday	7,797	25	7,311	23	7,937	20	7,901	32	8,028	21
Thursday	7,901	19	7,215	19	8,122	19	8,192	32	7,460	19
Friday	8,208 †	19	7,694 †	19	8,813 †	25	8,904 †	25	8,635 †	22
Saturday	5,961	29	6,415	25	6,681	23	6,974	27	6,673	25
Sunday	4,840	23	4,778	29	5,259	19	5,314	27	5,220	39
<b>Total</b>	<b>49,033</b>	<b>142</b>	<b>47,319</b>	<b>149</b>	<b>51,923</b>	<b>152</b>	<b>52,478</b>	<b>181</b>	<b>51,916</b>	<b>165</b>

Note: † Indicates that the highest number of total crashes reported in the 5-year period occurred on the same day of the week



## 2018 - Crashes by Day of Week

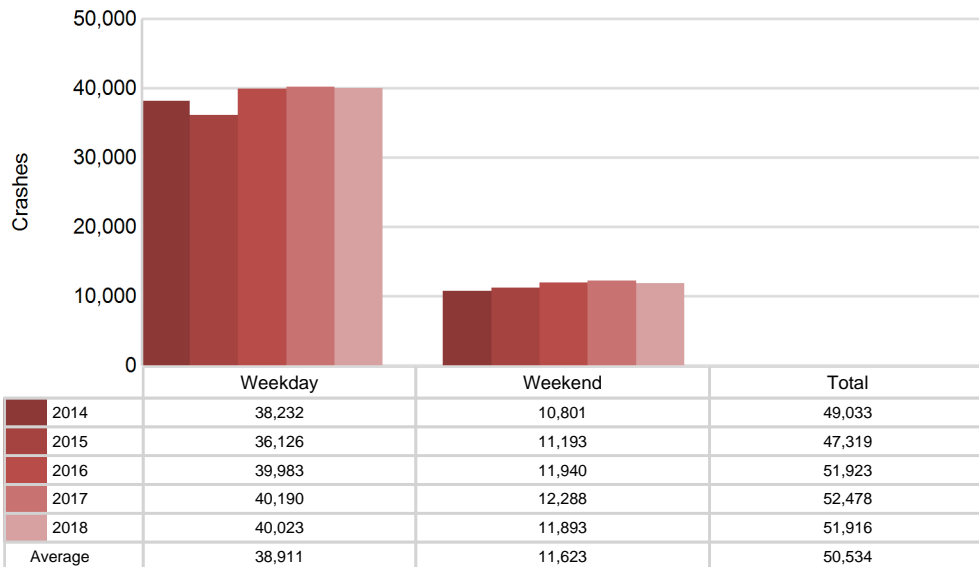
Day	All Crashes		Fatal Crashes		Injury Crashes			PDO Crashes
	Number	% of Total	Number	% of Fatal	A	B	C	Number
Monday	7,845	15.1	21	12.7	123	342	827	6,532
Tuesday	8,055	15.5	18	10.9	141	334	900	6,662
Wednesday	8,028	15.5	21	12.7	127	323	776	6,781
Thursday	7,460	14.4	19	11.5	131	338	720	6,252
Friday	8,635	16.6	22	13.3	143	428	880	7,162
Saturday	6,673	12.9	25	15.2	151	343	700	5,454
Sunday	5,220	10.1	39	23.6	102	313	478	4,288
<b>Total</b>	<b>51,916</b>	<b>100.0</b>	<b>165</b>	<b>100.0</b>	<b>918</b>	<b>2,421</b>	<b>5,281</b>	<b>43,131</b>



## 5-Year Trend - Crashes by Weekday and Weekend

Portion of Week	2014		2015		2016		2017		2018	
	Total Crashes	Fatal Crashes	Total Crashes	Fatal Crashes	Total Crashes	Fatal Crashes	Total Crashes	Fatal Crashes	Total Crashes	Fatal Crashes
Weekday	38,232	90	36,126	95	39,983	110	40,190	127	40,023	101
Weekend	10,801	52	11,193	54	11,940	42	12,288	54	11,893	64
<b>Total</b>	<b>49,033</b>	<b>142</b>	<b>47,319</b>	<b>149</b>	<b>51,923</b>	<b>152</b>	<b>52,478</b>	<b>181</b>	<b>51,916</b>	<b>165</b>

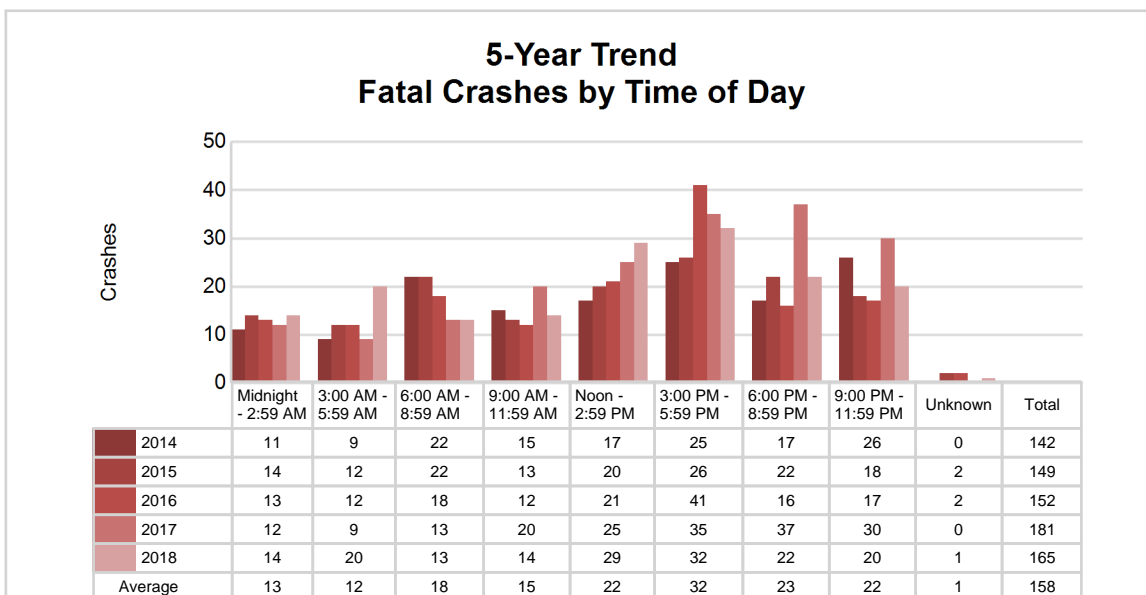
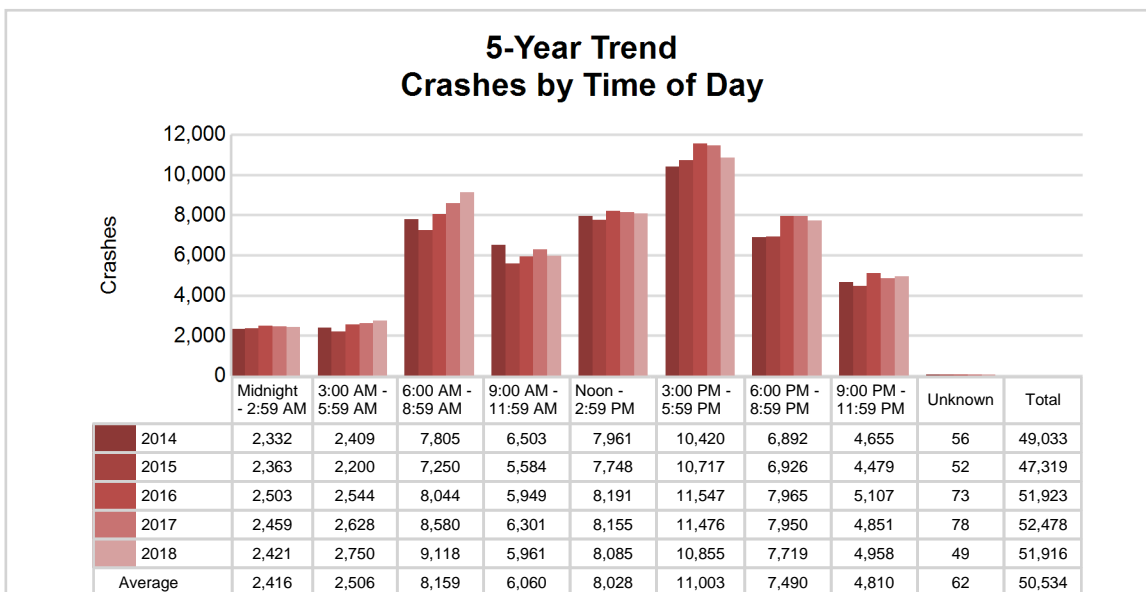
### 5-Year Crash Trends by Weekday (Monday - Friday) and Weekend (Saturday & Sunday)



## 5-Year Trend - Crashes by Time of Day

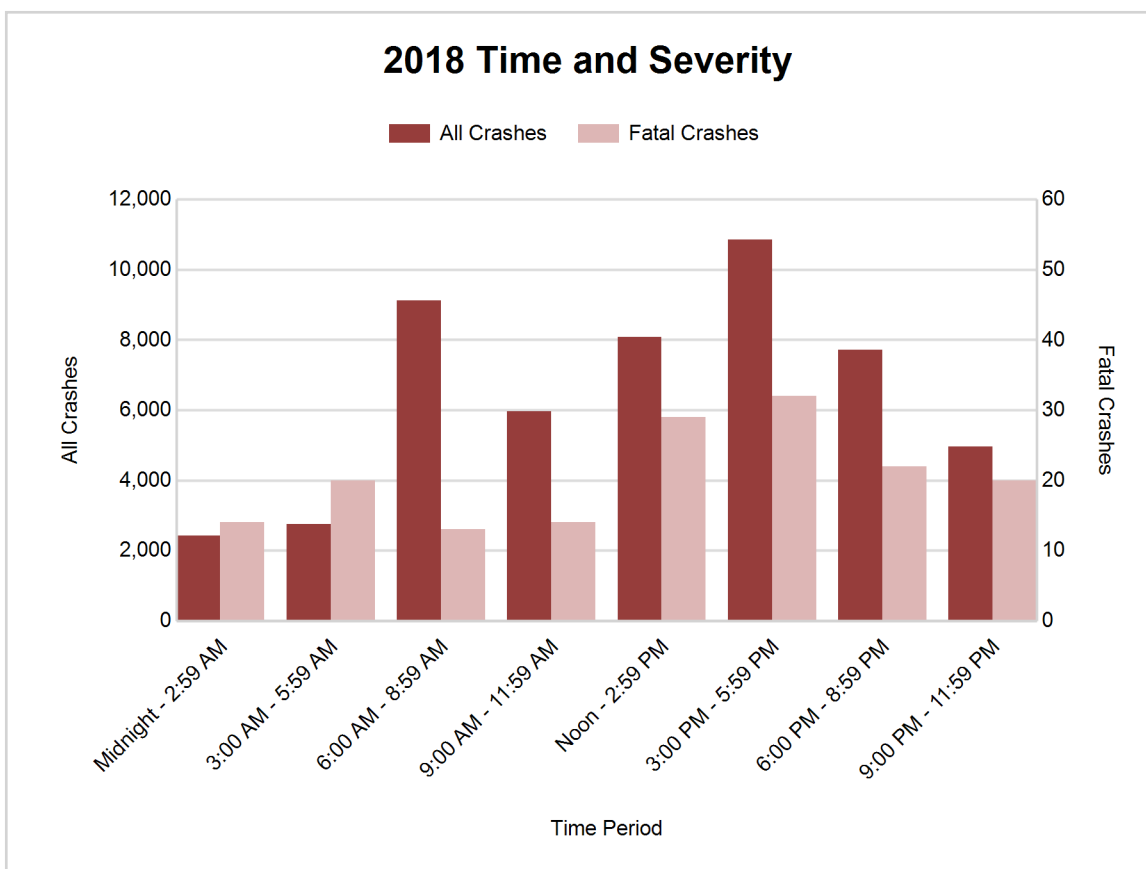
Time of Day	2014		2015		2016		2017		2018	
	Total Crashes	Fatal Crashes	Total Crashes	Fatal Crashes	Total Crashes	Fatal Crashes	Total Crashes	Fatal Crashes	Total Crashes	Fatal Crashes
Midnight - 2:59 AM	2,332	11	2,363	14	2,503	13	2,459	12	2,421	14
3:00 AM - 5:59 AM	2,409	9	2,200	12	2,544	12	2,628	9	2,750	20
6:00 AM - 8:59 AM	7,805	22	7,250	22	8,044	18	8,580	13	9,118	13
9:00 AM - 11:59 AM	6,503	15	5,584	13	5,949	12	6,301	20	5,961	14
Noon - 2:59 PM	7,961	17	7,748	20	8,191	21	8,155	25	8,085	29
3:00 PM - 5:59 PM	10,420 †	25	10,717 †	26	11,547 †	41	11,476 †	35	10,855 †	32
6:00 PM - 8:59 PM	6,892	17	6,926	22	7,965	16	7,950	37	7,719	22
9:00 PM - 11:59 PM	4,655	26	4,479	18	5,107	17	4,851	30	4,958	20
Unknown	56	0	52	2	73	2	78	0	49	1
<b>Total</b>	<b>49,033</b>	<b>142</b>	<b>47,319</b>	<b>149</b>	<b>51,923</b>	<b>152</b>	<b>52,478</b>	<b>181</b>	<b>51,916</b>	<b>165</b>

Note: † Indicates that the highest number of total crashes reported in the 5-year period occurred in the same time period



2018 - Time and Severity

Time of Day	All Crashes		Fatal Crashes		Injury Crashes			PDO Crashes
	Number	% of Total	Number	% of Fatal	A	B	C	Number
Midnight - 2:59 AM	2,421	4.7	14	8.5	57	136	207	2,007
3:00 AM - 5:59 AM	2,750	5.3	20	12.1	56	125	199	2,350
6:00 AM - 8:59 AM	9,118	17.6	13	7.9	102	287	762	7,954
9:00 AM - 11:59 AM	5,961	11.5	14	8.5	109	266	675	4,897
Noon - 2:59 PM	8,085	15.6	29	17.6	134	450	1,024	6,448
3:00 PM - 5:59 PM	10,855	20.9	32	19.4	189	572	1,345	8,717
6:00 PM - 8:59 PM	7,719	14.9	22	13.3	156	363	664	6,514
9:00 PM - 11:59 PM	4,958	9.6	20	12.1	114	221	404	4,199
Unknown	49	0.1	1	0.6	1	1	1	45
<b>Total</b>	<b>51,916</b>	<b>100.0</b>	<b>165</b>	<b>100.0</b>	<b>918</b>	<b>2,421</b>	<b>5,281</b>	<b>43,131</b>

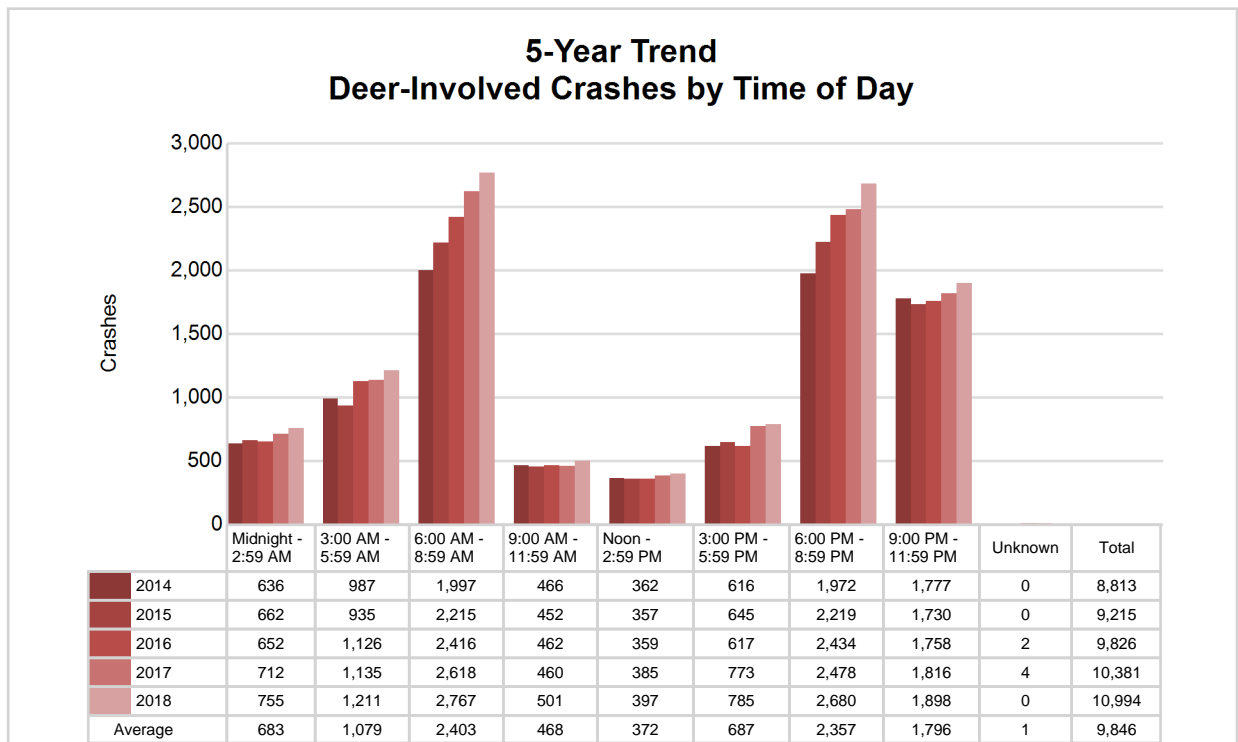


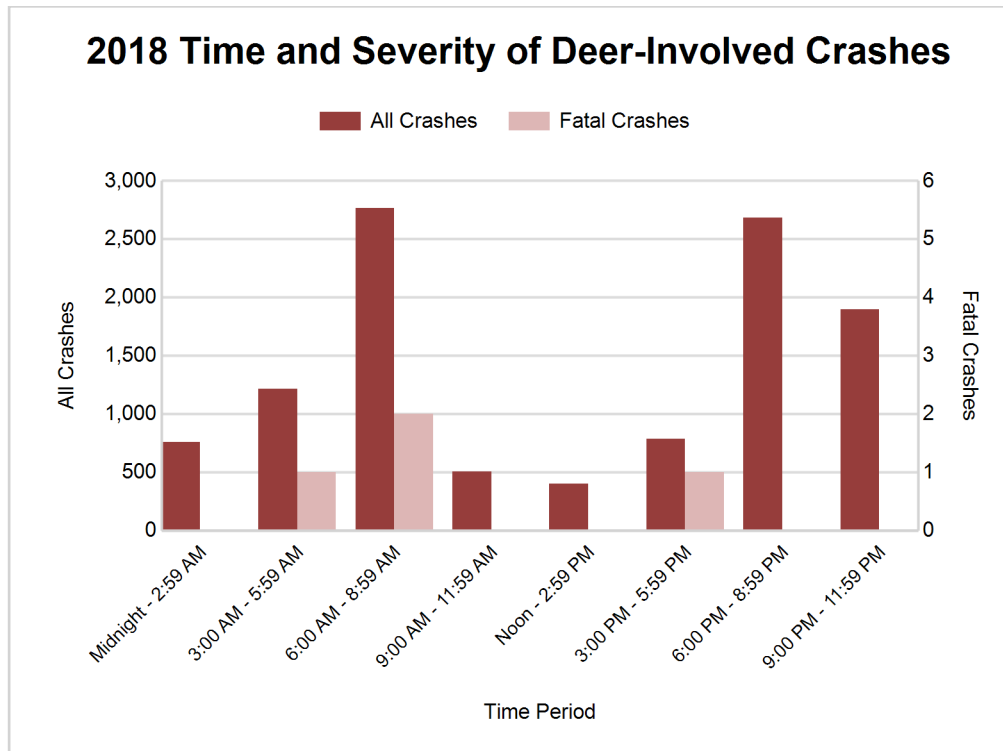


## 5-Year Trend - Deer-Involved Crashes by Time of Day

Time of Day	2014		2015		2016		2017		2018	
	Total Crashes	Fatal Crashes	Total Crashes	Fatal Crashes	Total Crashes	Fatal Crashes	Total Crashes	Fatal Crashes	Total Crashes	Fatal Crashes
Midnight - 2:59 AM	636	0	662	1	652	0	712	0	755	0
3:00 AM - 5:59 AM	987	0	935	0	1,126	0	1,135	0	1,211	1
6:00 AM - 8:59 AM	1,997	0	2,215	1	2,416	0	2,618	1	2,767	2
9:00 AM - 11:59 AM	466	0	452	0	462	0	460	0	501	0
Noon - 2:59 PM	362	0	357	0	359	1	385	0	397	0
3:00 PM - 5:59 PM	616	1	645	0	617	1	773	1	785	1
6:00 PM - 8:59 PM	1,972	0	2,219	0	2,434	0	2,478	2	2,680	0
9:00 PM - 11:59 PM	1,777	1	1,730	1	1,758	0	1,816	0	1,898	0
Unknown	0	0	0	0	2	0	4	0	0	0
<b>Total</b>	<b>8,813</b>	<b>2</b>	<b>9,215</b>	<b>3</b>	<b>9,826</b>	<b>2</b>	<b>10,381</b>	<b>4</b>	<b>10,994</b>	<b>4</b>

Note: † Indicates that the highest number of total crashes reported in the 5-year period occurred in the same time period



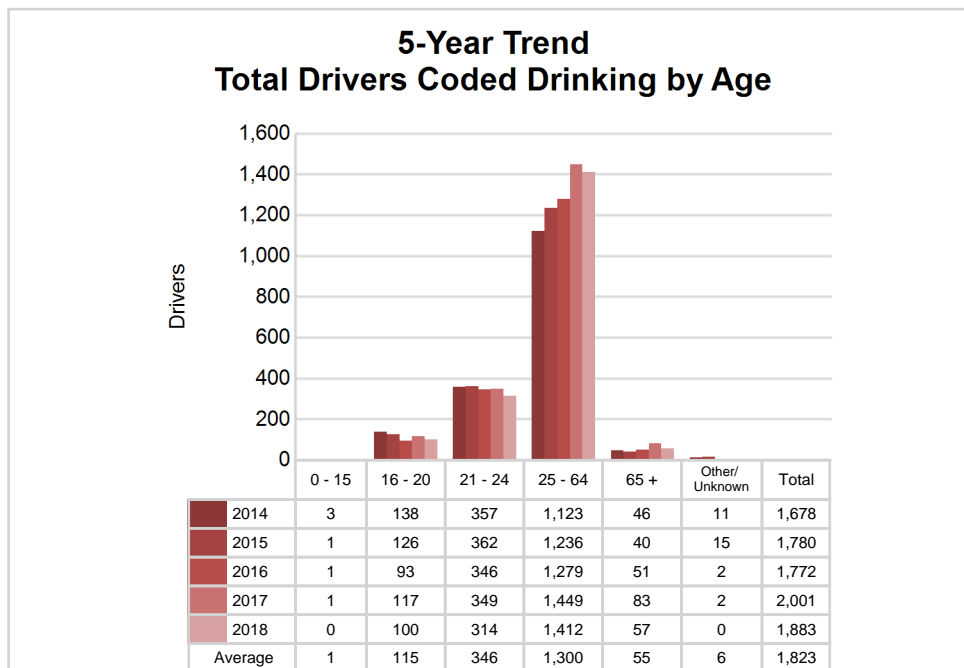
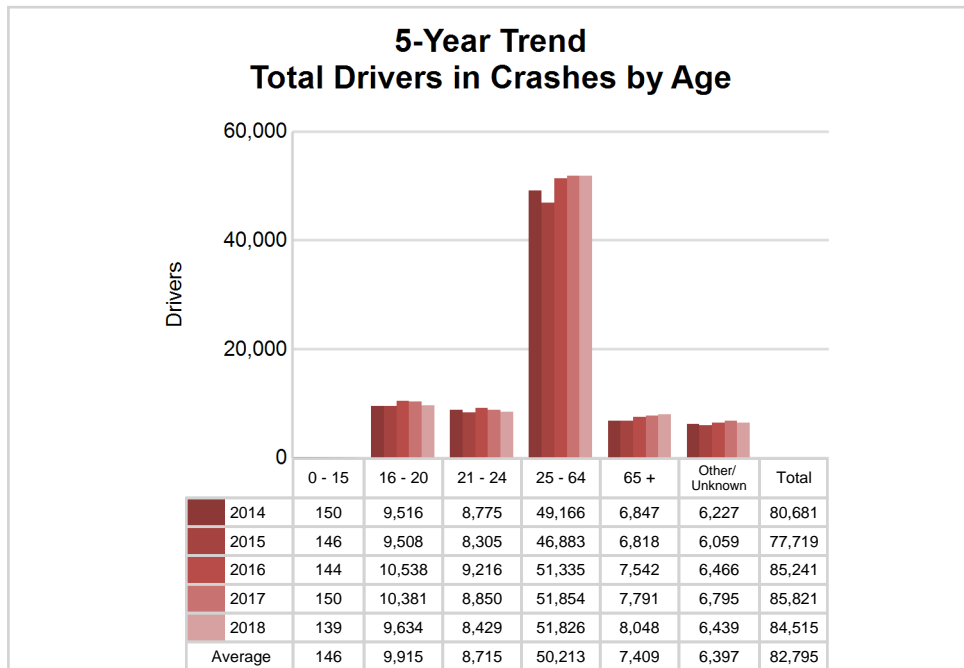


### 2018 - Reported Motor Vehicle Crashes by County

County	Crashes											Persons	
	Total	Fatal	Injury	Property Damage	Inter-state	US Route	State Route	Local Street	Alcohol-Involved	Drug-Involved	Deer-Involved	Fatalities	Injuries
Allegan	3,794	15	565	3,214	284	594	729	2,184	172	44	1,160	16	764
Barry	1,581	7	199	1,375	0	0	638	941	46	12	724	8	276
Ionia	1,736	5	273	1,458	394	0	543	798	60	24	539	5	363
Kent	22,307	61	4,028	18,218	2,585	2,297	4,572	12,833	855	167	1,837	65	5,453
Lake	445	2	75	368	0	100	76	258	20	3	231	2	99
Mason	1,391	7	139	1,245	0	541	43	807	36	7	746	7	187
Mecosta	1,788	3	216	1,569	0	237	686	865	40	10	875	3	280
Montcalm	2,163	13	343	1,807	0	125	783	1,253	68	12	993	14	498
Muskegon	4,899	16	963	3,920	77	1,022	611	3,185	164	57	613	16	1,319
Newaygo	1,530	9	215	1,306	0	0	518	1,010	66	12	728	9	320
Oceana	1,087	1	164	922	0	235	127	725	42	7	562	1	210
Osceola	1,224	3	141	1,080	0	401	177	646	39	8	719	4	177
Ottawa	7,971	23	1,299	6,649	912	923	850	5,279	305	64	1,267	26	1,743
<b>Total</b>	<b>51,916</b>	<b>165</b>	<b>8,620</b>	<b>43,131</b>	<b>4,252</b>	<b>6,475</b>	<b>10,353</b>	<b>30,784</b>	<b>1,913</b>	<b>427</b>	<b>10,994</b>	<b>176</b>	<b>11,689</b>

## 5-Year Trend - Drivers in Crashes Coded Drinking by Driver Age

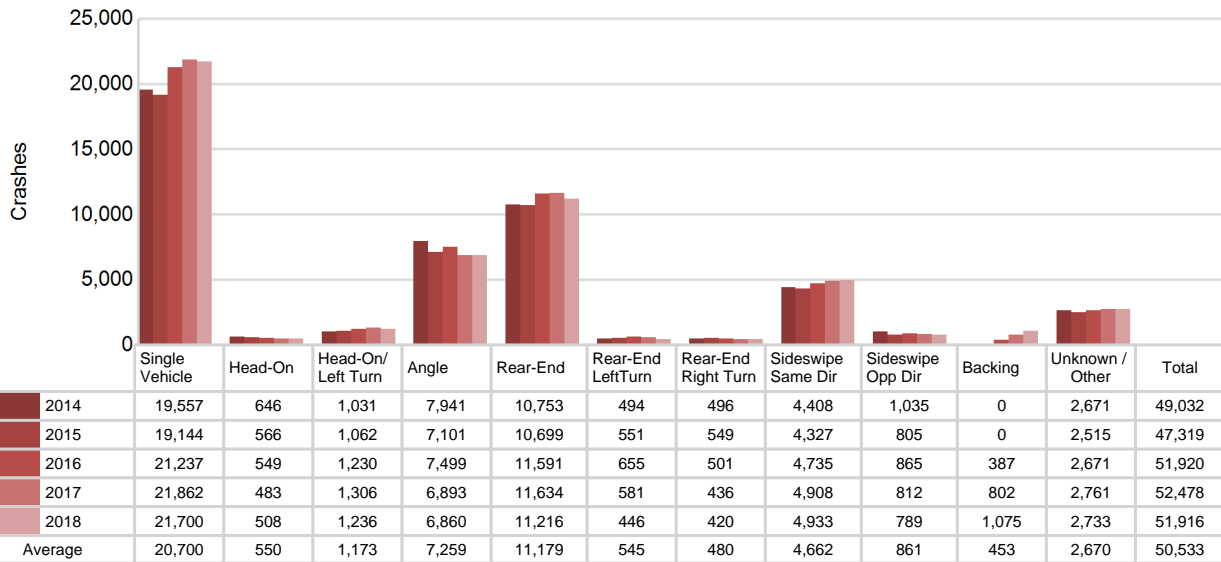
Driver Age	2014		2015		2016		2017		2018	
	Total Drivers in Crashes	Total Drivers Coded Drinking	Total Drivers in Crashes	Total Drivers Coded Drinking	Total Drivers in Crashes	Total Drivers Coded Drinking	Total Drivers in Crashes	Total Drivers Coded Drinking	Total Drivers in Crashes	Total Drivers Coded Drinking
0 - 15	150	3	146	1	144	1	150	1	139	0
16 - 20	9,516	138	9,508	126	10,538	93	10,381	117	9,634	100
21 - 24	8,775	357	8,305	362	9,216	346	8,850	349	8,429	314
25 - 64	49,166	1,123	46,883	1,236	51,335	1,279	51,854	1,449	51,826	1,412
65 +	6,847	46	6,818	40	7,542	51	7,791	83	8,048	57
Unknown	6,227	11	6,059	15	6,466	2	6,795	2	6,439	0
<b>Total</b>	<b>80,681</b>	<b>1,678</b>	<b>77,719</b>	<b>1,780</b>	<b>85,241</b>	<b>1,772</b>	<b>85,821</b>	<b>2,001</b>	<b>84,515</b>	<b>1,883</b>



5-Year Trend - Crashes by Crash Type

Crash Type	2014		2015		2016		2017		2018	
	Total Crashes	Fatal Crashes	Total Crashes	Fatal Crashes	Total Crashes	Fatal Crashes	Total Crashes	Fatal Crashes	Total Crashes	Fatal Crashes
Single motor vehicle	19,557	48	19,144	77	21,237	65	21,862	85	21,700	78
Head-on	646	32	566	23	549	19	483	16	508	19
Head-on / left turn	1,031	2	1,062	1	1,230	12	1,306	8	1,236	7
Angle	7,941	39	7,101	27	7,499	42	6,893	39	6,860	36
Rear-end	10,753	4	10,699	7	11,591	8	11,634	13	11,216	15
Rear-end left turn	494	1	551	1	655	2	581	2	446	3
Rear-end right turn	496	0	549	0	501	0	436	0	420	0
Sideswipe same direction	4,408	4	4,327	1	4,735	0	4,908	5	4,933	1
Sideswipe opposite direction	1,035	3	805	2	865	2	812	2	789	0
Backing	0	0	0	0	387	0	802	0	1,075	0
Other / Unknown	2,671	9	2,515	10	2,671	2	2,761	11	2,733	6
Uncoded and Errors	1	0	0	0	3	0	0	0	0	0
<b>Total</b>	<b>49,033</b>	<b>142</b>	<b>47,319</b>	<b>149</b>	<b>51,923</b>	<b>152</b>	<b>52,478</b>	<b>181</b>	<b>51,916</b>	<b>165</b>

5-Year Trend  
Crashes by Crash Type



## 2018 - Bodily Alcohol Concentration (BAC) Results Among All Vehicle Drivers in Alcohol-Involved Crashes by Age

Age Group	Drivers				BAC Result Range for Drivers Coded Drinking				
	Total Drivers in Alcohol-Involved Crashes	Total Drivers Tested in all Crashes	Total Drivers Coded Drinking, Tested	Total Drivers Coded Drinking	BAC = 0.00	BAC 0.01 g/dL to 0.07 g/dL	BAC 0.08 g/dL to 0.16 g/dL	BAC 0.17 g/dL and Above	BAC Not Reported
0 - 15	6	1	0	0	0	0	0	0	0
16 - 20	175	138	79	100	0	13	34	17	36
21 - 24	375	319	257	314	1	37	99	78	99
25 - 64	1,848	1,404	1,105	1,412	4	113	352	390	553
65 +	107	85	51	57	0	8	21	13	15
Unknown	248	0	0	0	0	0	0	0	0
<b>Total</b>	<b>2,759</b>	<b>1,947</b>	<b>1,492</b>	<b>1,883</b>	<b>5</b>	<b>171</b>	<b>506</b>	<b>498</b>	<b>703</b>

Notes: BAC measured in grams (g) per deciliter (dL).  
 BAC may not be reported if drivers are not tested or if the results are not available immediately (as in the case of a blood test).  
 A driver may be coded by the officer as drinking even though no test is administered.

## Alcohol-Involved Crashes

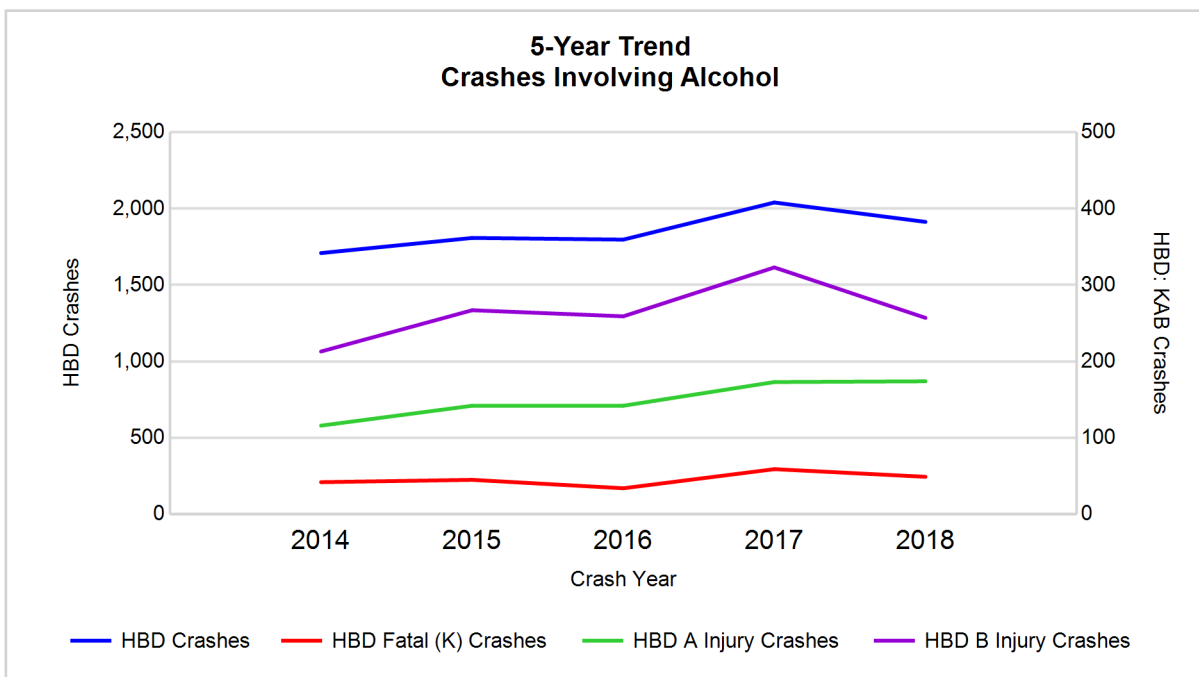
In 2018, there were 2,759 drivers in alcohol-involved crashes; 1,883 (68.2%) of those drivers were coded as had-been-drinking by the officer on the crash form.

- 1,004 (53.3%) of the 1,883 drivers had a blood alcohol concentration (BAC) of 0.08 g/dL (grams per deciliter) or greater, and 498 (49.6%) of the 1,004 drivers had a BAC at or above 0.17 g/dL.
- 1,492 (79.2%) of the 1,883 drivers were coded as had-been-drinking and were tested for alcohol consumption.

## 5-Year Trend - Crashes Involving Alcohol

Year	All Crashes	HBD Crashes	% HBD	Fatal Crashes	HBD Fatal Crashes	% HBD	A Injury Crashes	HBD A Injury Crashes	% HBD	B Injury Crashes	HBD B Injury Crashes	% HBD
2014	49,033	1,709	3.5	142	42	29.6	733	116	15.8	2,051	213	10.4
2015	47,319	1,808	3.8	149	45	30.2	731	142	19.4	2,005	267	13.3
2016	51,923	1,797	3.5	152	34	22.4	941	142	15.1	2,480	259	10.4
2017	52,478	2,040	3.9	181	59	32.6	962	173	18.0	2,465	323	13.1
2018	51,916	1,913	3.7	165	49	29.7	918	174**	19.0	2,421	257	10.6

Note: \* Indicates that the most recent year is the lowest number or percentage reported in the 5-year period in that column  
 \*\* Indicates that the most recent year is the highest number or percentage reported in the 5-year period in that column

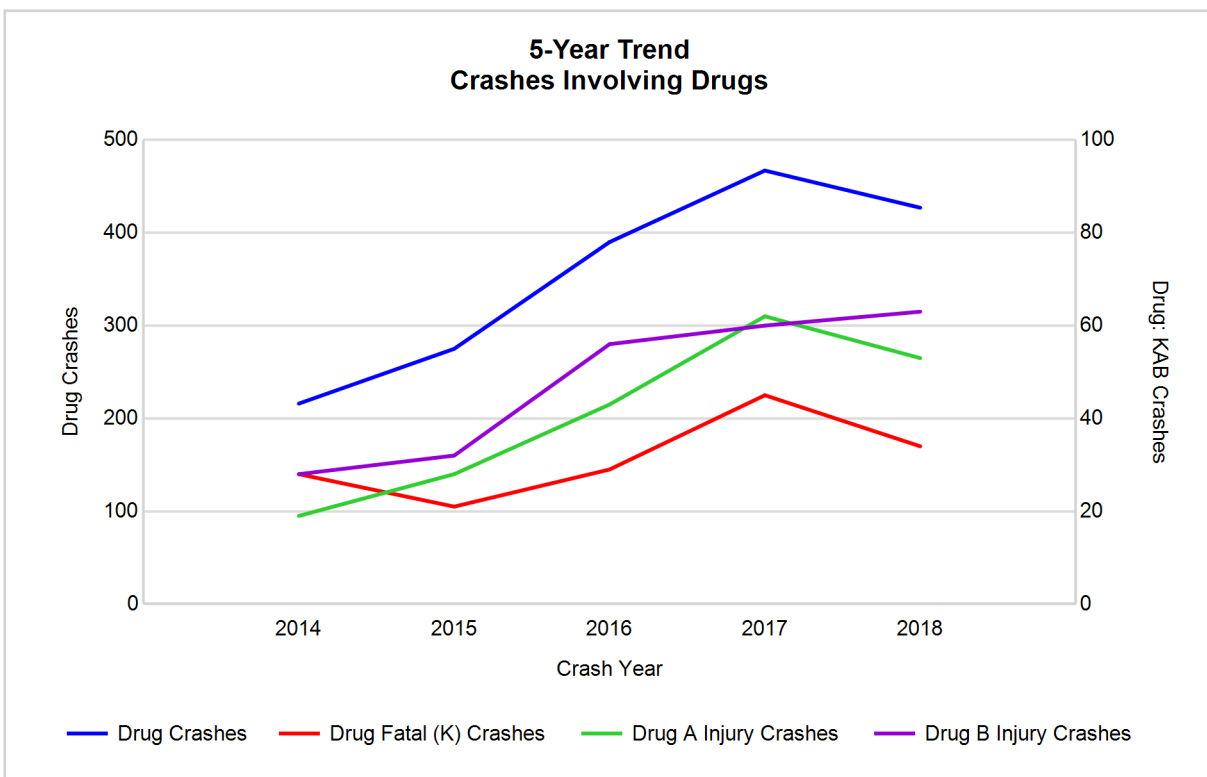


Note: Had-Been-Drinking (HBD)

5-Year Trend - Crashes Involving Drugs

Year	All Crashes	Drug Crashes	% Drug	Fatal Crashes	Drug Fatal Crashes	% Drug	A Injury Crashes	Drug A Injury Crashes	% Drug	B Injury Crashes	Drug B Injury Crashes	% Drug
2014	49,033	216	0.4	142	28	19.7	733	19	2.6	2,051	28	1.4
2015	47,319	275	0.6	149	21	14.1	731	28	3.8	2,005	32	1.6
2016	51,923	390	0.8	152	29	19.1	941	43	4.6	2,480	56	2.3
2017	52,478	467	0.9	181	45	24.9	962	62	6.4	2,465	60	2.4
2018	51,916	427	0.8	165	34	20.6	918	53	5.8	2,421	63**	2.6**

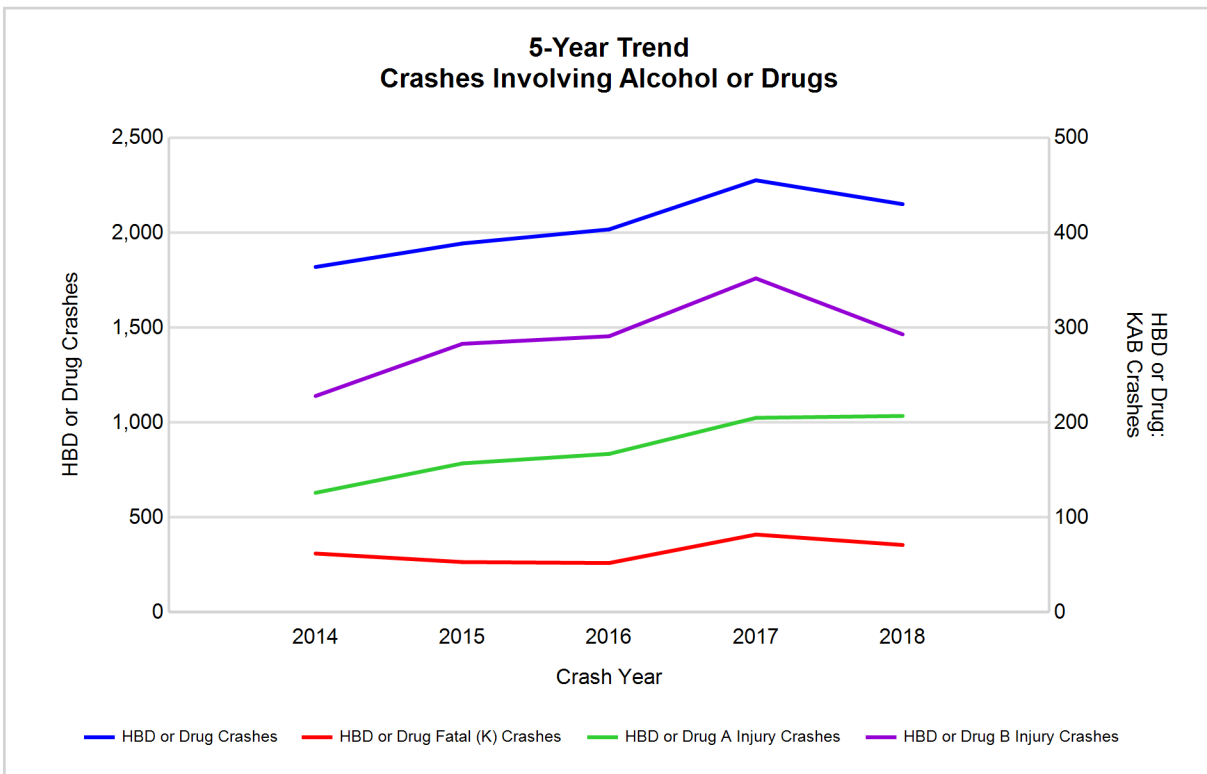
Note: \* Indicates that the most recent year is the lowest number or percentage reported in the 5-year period in that column  
 \*\* Indicates that the most recent year is the highest number or percentage reported in the 5-year period in that column



## 5-Year Trend - Crashes Involving Alcohol or Drugs

Year	All Crashes	HBD or Drug Crashes	% HBD or Drug	Fatal Crashes	HBD or Drug Fatal Crashes	% HBD or Drug	A Injury Crashes	HBD or Drug A Injury Crashes	% HBD or Drug	B Injury Crashes	HBD or Drug B Injury Crashes	% HBD or Drug
2014	49,033	1,820	3.7	142	62	43.7	733	126	17.2	2,051	228	11.1
2015	47,319	1,944	4.1	149	53	35.6	731	157	21.5	2,005	283	14.1
2016	51,923	2,018	3.9	152	52	34.2	941	167	17.7	2,480	291	11.7
2017	52,478	2,277	4.3	181	82	45.3	962	205	21.3	2,465	352	14.3
2018	51,916	2,151	4.1	165	71	43.0	918	207**	22.5**	2,421	293	12.1

Note: \* Indicates that the most recent year is the lowest number or percentage reported in the 5-year period in that column  
 \*\* Indicates that the most recent year is the highest number or percentage reported in the 5-year period in that column



Note: Had-Been-Drinking (HBD)

## 2018 - Restraints Worn Among Vehicle Drivers and Injured Passengers by Vehicle Type

Vehicle Type	Total Occupants			Fatalities			A - Suspected Serious			B - Suspected Minor			C - Possible Injury			No Injury		
	Total	Used Restraint	%	Total	Used Restraint	%	Total	Used Restraint	%	Total	Used Restraint	%	Total	Used Restraint	%	Total	Used Restraint	%
Passenger car, SUV, van	71,455	64,754	90.6	102	73	71.6	716	567	79.2	2,280	2,078	91.1	6,435	6,178	96.0	57,984	55,845	96.3
Motor home	273	243	89.0	0	0	0.0	2	0	0.0	10	10	100.0	20	18	90.0	226	215	95.1
Pickup truck	9,906	9,014	91.0	14	4	28.6	118	86	72.9	325	286	88.0	621	582	93.7	8,310	8,053	96.9
Small truck under 10,000 lbs. GVWR	477	420	88.1	1	0	0.0	4	4	100.0	14	11	78.6	22	21	95.5	400	384	96.0
Motorcycle	541	363	67.1	28	21	75.0	123	73	59.3	184	129	70.1	87	62	71.3	104	78	75.0
Moped / goped	84	25	29.8	1	0	0.0	8	4	50.0	34	11	32.4	21	6	28.6	15	4	26.7
Go-cart / golf cart	9	2	22.2	0	0	0.0	0	0	0.0	2	0	0.0	0	0	0.0	4	2	50.0
Snowmobile	5	4	80.0	0	0	0.0	1	1	100.0	2	2	100.0	1	1	100.0	1	0	0.0
Off-Road Vehicle - ORV / All-Terrain Vehicle - ATV	50	17	34.0	2	0	0.0	20	8	40.0	11	4	36.4	3	1	33.3	11	4	36.4
Other	339	176	51.9	1	0	0.0	3	1	33.3	9	4	44.4	14	3	21.4	263	168	63.9
Truck/bus over 10,000 lbs.	2,452	2,268	92.5	3	1	33.3	16	11	68.8	32	24	75.0	96	63	65.6	2,220	2,169	97.7
Unknown	1,722	4	0.2	0	0	0.0	0	0	0.0	0	0	0.0	2	0	0.0	28	3	10.7
<b>Total</b>	<b>87,313</b>	<b>77,290</b>	<b>88.5</b>	<b>152</b>	<b>99</b>	<b>65.1</b>	<b>1,011</b>	<b>755</b>	<b>74.7</b>	<b>2,903</b>	<b>2,559</b>	<b>88.2</b>	<b>7,322</b>	<b>6,935</b>	<b>94.7</b>	<b>69,566</b>	<b>66,925</b>	<b>96.2</b>

Note: Restraint Use includes shoulder belt only used, lap belt only used, both lap and shoulder belts used, child restraint used, restraint failure, and helmet worn.

## 2018 - Restraints Worn Among Vehicle Drivers and Injured Passengers by Age

Age Group	Total Occupants			Fatalities			A - Suspected Serious			B - Suspected Minor			C - Possible Injury			No Injury		
	Total	Used Restraint	%	Total	Used Restraint	%	Total	Used Restraint	%	Total	Used Restraint	%	Total	Used Restraint	%	Total	Used Restraint	%
0 - 15	858	758	88.3	5	2	40.0	41	27	65.9	178	148	83.1	513	485	94.5	118	96	81.4
16 - 20	10,064	9,660	96.0	8	4	50.0	131	87	66.4	408	363	89.0	912	863	94.6	8,591	8,342	97.1
21 - 24	8,658	8,221	95.0	18	12	66.7	97	68	70.1	319	273	85.6	711	673	94.7	7,495	7,195	96.0
25 - 64	52,941	50,564	95.5	88	53	60.2	637	481	75.5	1,629	1,430	87.8	4,367	4,136	94.7	46,055	44,451	96.5
65 +	8,353	8,086	96.8	33	28	84.8	104	92	88.5	368	345	93.8	810	778	96.0	7,024	6,840	97.4
Unknown	6,439	1	0.0	0	0	0.0	1	0	0.0	1	0	0.0	9	0	0.0	283	1	0.4
<b>Total</b>	<b>87,313</b>	<b>77,290</b>	<b>88.5</b>	<b>152</b>	<b>99</b>	<b>65.1</b>	<b>1,011</b>	<b>755</b>	<b>74.7</b>	<b>2,903</b>	<b>2,559</b>	<b>88.2</b>	<b>7,322</b>	<b>6,935</b>	<b>94.7</b>	<b>69,566</b>	<b>66,925</b>	<b>96.2</b>

Note: Restraint Use includes shoulder belt only used, lap belt only used, both lap and shoulder belts used, child restraint used, restraint failure, and helmet worn.



## 5-Year Trend - Restraint Use Among Drivers

Restraint Use	2014			2015			2016			2017			2018		
	Drivers	Fatal Drivers	Injured Drivers	Drivers	Fatal Drivers	Injured Drivers	Drivers	Fatal Drivers	Injured Drivers	Drivers	Fatal Drivers	Injured Drivers	Drivers	Fatal Drivers	Injured Drivers
No belts available	375	3	48	354	1	35	224	4	20	132	0	20	155	0	23
Shoulder belt only used	124	0	13	263	0	25	432	0	36	370	0	54	333	0	45
Lap belt only used	554	0	60	500	3	38	422	0	47	276	0	37	198	0	32
Both lap & shoulder belts used	69,822	47	6,618	67,462	44	6,454	74,167	46	7,568	74,411	67	7,357	73,890	60	7,460
No belts used	611	29	185	620	25	171	600	22	214	503	26	188	416	22	187
Child restraint used	5	0	1	0	0	0	7	0	1	4	0	0	2	0	0
Child restraint not used, unavailable or improper use	7	0	1	2	0	0	1	0	0	0	0	0	0	0	0
Restraint failure	64	0	9	54	1	5	53	1	8	39	0	8	35	0	3
Restraint use unknown	2,754	6	184	2,284	5	159	6,386	12	243	9,269	13	254	8,800	8	271
Helmet worn	490	10	353	461	8	323	447	7	341	395	16	269	385	19	282
Helmet not worn	220	11	168	223	11	160	277	14	209	221	14	167	196	8	152
Helmet use unknown	54	2	25	34	1	20	42	1	23	34	0	17	25	0	18
Uncoded & errors	5,601	0	6	5,462	0	10	2,183	0	2	167	0	0	80	0	0
<b>Total</b>	<b>80,681</b>	<b>108</b>	<b>7,671</b>	<b>77,719</b>	<b>99</b>	<b>7,400</b>	<b>85,241</b>	<b>107</b>	<b>8,712</b>	<b>85,821</b>	<b>136</b>	<b>8,371</b>	<b>84,515</b>	<b>117</b>	<b>8,473</b>

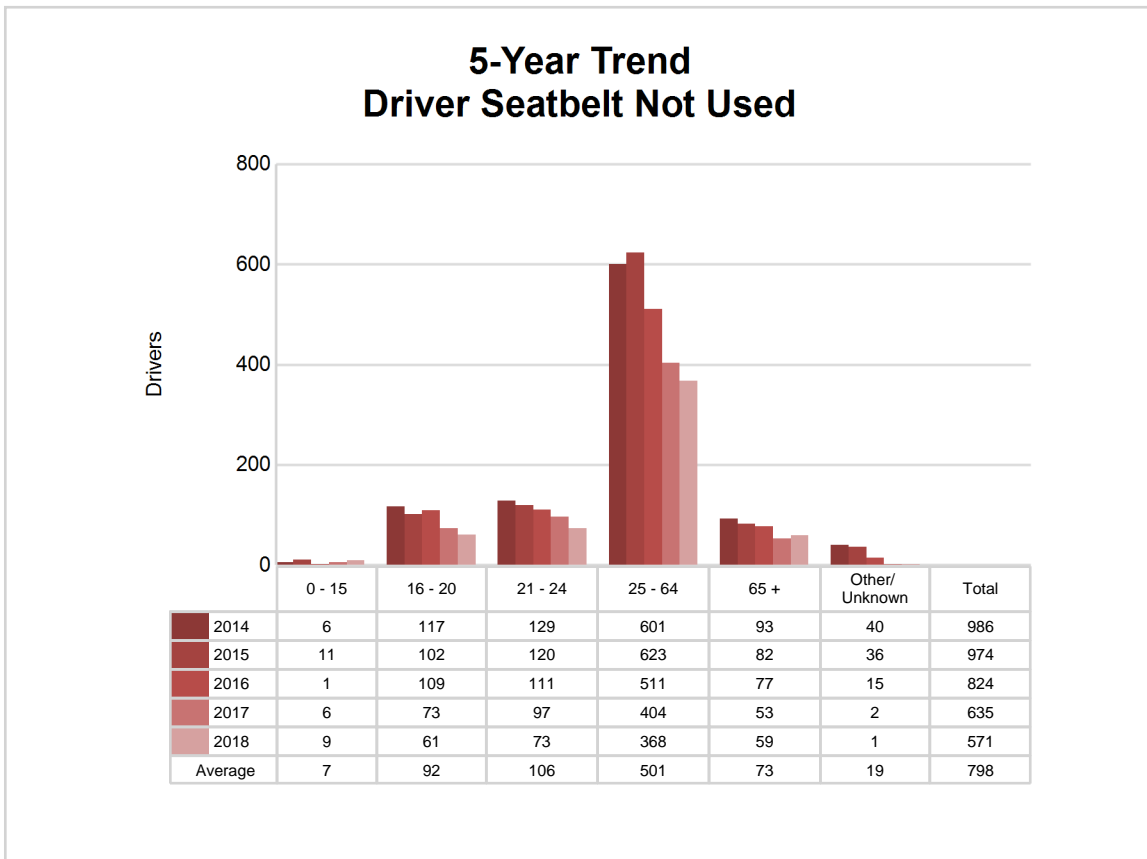
## 5-Year Trend - Restraint Use Among Drivers Coded Drinking

Restraint Use	2014			2015			2016			2017			2018		
	Drivers	Fatal Drivers	Injured Drivers	Drivers	Fatal Drivers	Injured Drivers	Drivers	Fatal Drivers	Injured Drivers	Drivers	Fatal Drivers	Injured Drivers	Drivers	Fatal Drivers	Injured Drivers
No belts available	19	0	6	10	1	1	8	1	2	10	0	7	2	0	0
Shoulder belt only used	3	0	0	11	0	1	12	0	0	9	0	7	5	0	1
Lap belt only used	11	0	3	14	2	1	9	0	3	5	0	0	2	0	1
Both lap & shoulder belts used	1,216	6	276	1,322	4	346	1,267	2	315	1,447	12	385	1,382	10	368
No belts used	93	9	55	105	9	56	104	8	64	104	16	62	74	10	49
Child restraint used	0	0	0	0	0	0	0	0	0	0	0	0	0	0	0
Child restraint not used, unavailable or improper use	2	0	0	0	0	0	0	0	0	0	0	0	0	0	0
Restraint failure	7	0	1	8	0	0	5	1	2	1	0	0	4	0	1
Restraint use unknown	253	2	58	242	2	61	290	3	78	359	4	77	358	2	88
Helmet worn	17	2	13	18	2	14	22	0	19	19	3	13	23	3	15
Helmet not worn	39	4	31	34	5	26	53	8	42	45	5	37	29	2	26
Helmet use unknown	10	2	6	5	1	3	2	0	2	2	0	2	3	0	3
Uncoded & errors	8	0	1	11	0	0	0	0	0	0	0	0	1	0	0
<b>Total</b>	<b>1,678</b>	<b>25</b>	<b>450</b>	<b>1,780</b>	<b>26</b>	<b>509</b>	<b>1,772</b>	<b>23</b>	<b>527</b>	<b>2,001</b>	<b>40</b>	<b>590</b>	<b>1,883</b>	<b>27</b>	<b>552</b>

5-Year Trend - Seatbelt Not Used Among Drivers by Age

Age Group	2014			2015			2016			2017			2018		
	Drivers	Fatal Drivers	Injured Drivers	Drivers	Fatal Drivers	Injured Drivers	Drivers	Fatal Drivers	Injured Drivers	Drivers	Fatal Drivers	Injured Drivers	Drivers	Fatal Drivers	Injured Drivers
0 - 15	6	0	0	11	0	4	1	0	0	6	0	2	9	0	1
16 - 20	117	4	36	102	1	24	109	5	33	73	3	31	61	1	34
21 - 24	129	3	34	120	2	28	111	3	31	97	5	37	73	3	28
25 - 64	601	19	138	623	19	132	511	10	144	404	16	123	368	16	135
65 +	93	6	25	82	4	17	77	8	26	53	2	15	59	2	12
Unknown	40	0	0	36	0	1	15	0	0	2	0	0	1	0	0
<b>Total</b>	<b>986</b>	<b>32</b>	<b>233</b>	<b>974</b>	<b>26</b>	<b>206</b>	<b>824</b>	<b>26</b>	<b>234</b>	<b>635</b>	<b>26</b>	<b>208</b>	<b>571</b>	<b>22</b>	<b>210</b>

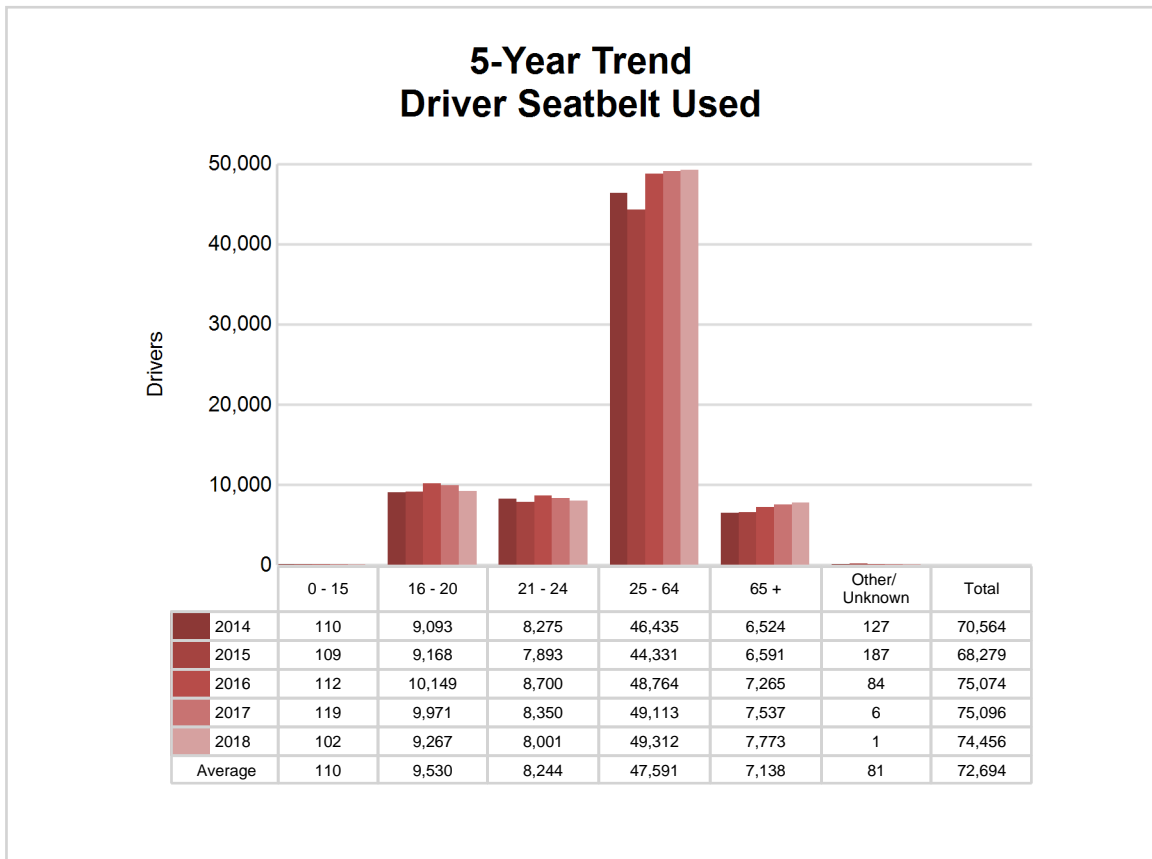
Note: Seatbelt Not Used includes no belts available or no belts used.



## 5-Year Trend - Seatbelt Used Among Drivers by Age

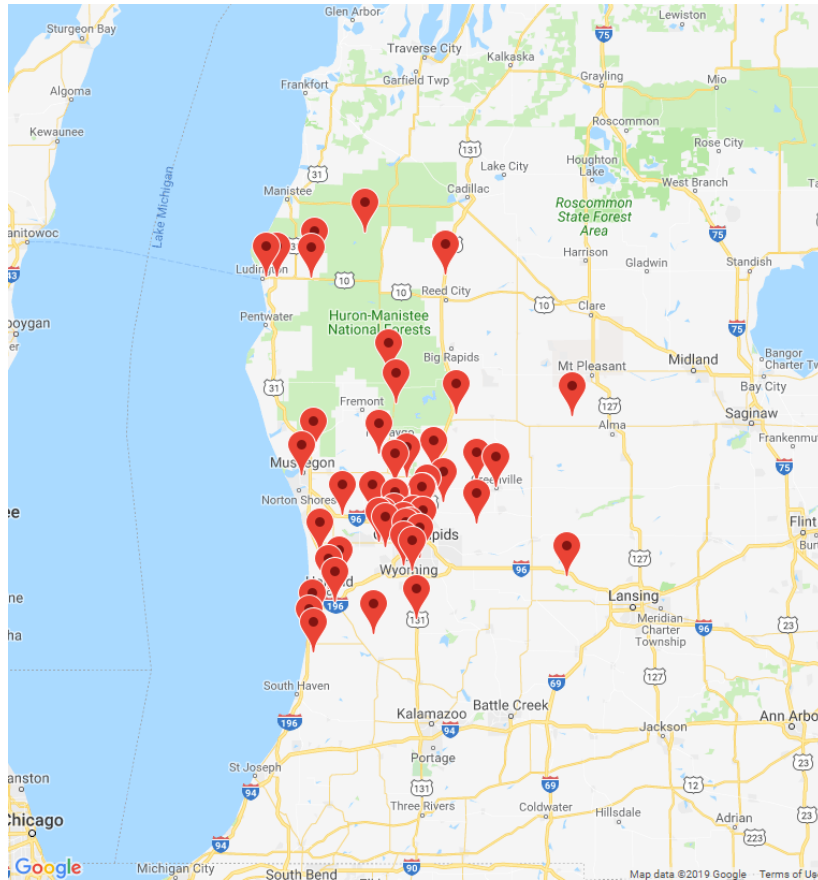
Age Group	2014			2015			2016			2017			2018		
	Drivers	Fatal Drivers	Injured Drivers	Drivers	Fatal Drivers	Injured Drivers	Drivers	Fatal Drivers	Injured Drivers	Drivers	Fatal Drivers	Injured Drivers	Drivers	Fatal Drivers	Injured Drivers
0 - 15	110	0	6	109	0	13	112	0	13	119	0	15	102	0	6
16 - 20	9,093	4	875	9,168	8	941	10,149	4	1,080	9,971	9	1,054	9,267	3	928
21 - 24	8,275	6	769	7,893	7	711	8,700	6	934	8,350	4	761	8,001	8	802
25 - 64	46,435	17	4,283	44,331	22	4,173	48,764	27	4,814	49,113	32	4,754	49,312	37	4,881
65 +	6,524	20	765	6,591	11	684	7,265	10	817	7,537	22	872	7,773	12	923
Unknown	127	0	2	187	0	0	84	0	1	6	0	0	1	0	0
<b>Total</b>	<b>70,564</b>	<b>47</b>	<b>6,700</b>	<b>68,279</b>	<b>48</b>	<b>6,522</b>	<b>75,074</b>	<b>47</b>	<b>7,659</b>	<b>75,096</b>	<b>67</b>	<b>7,456</b>	<b>74,456</b>	<b>60</b>	<b>7,540</b>

Note: Seatbelt Used includes shoulder belt only used, lap belt only used, both lap and shoulder belts used, and restraint failure.



## 5-Year Trend - Drivers in Crashes by Hazardous Action

Hazardous Action	2014		2015		2016		2017		2018	
	Total Drivers in Crashes	Drivers in Fatal Crashes	Total Drivers in Crashes	Drivers in Fatal Crashes	Total Drivers in Crashes	Drivers in Fatal Crashes	Total Drivers in Crashes	Drivers in Fatal Crashes	Total Drivers in Crashes	Drivers in Fatal Crashes
None	42,382	113	41,671	103	45,095	120	45,184	138	44,785	116
Speed too fast	7,927	20	5,771	26	6,943	24	6,711	30	6,418	31
Speed too slow	114	0	110	1	95	0	55	2	56	0
Failed to yield	7,175	20	6,869	17	7,526	22	7,360	24	7,495	24
Disregard traffic control	1,593	10	1,691	11	1,746	26	1,643	18	1,662	9
Drove wrong way	65	6	69	0	62	0	54	3	40	0
Drove left of center	412	18	372	12	391	5	392	12	367	6
Improper passing	454	0	388	5	454	2	477	1	450	1
Improper lane use	1,320	3	1,527	1	1,756	5	1,823	3	1,986	2
Improper turn	737	1	706	0	745	1	758	1	749	0
Improper/no signal	183	1	177	1	109	0	86	0	78	0
Improper backing	1,312	0	1,270	0	1,348	0	1,238	0	1,130	0
Unable to stop in assured clear distance	9,733	3	9,807	5	10,971	4	11,080	15	10,621	12
Other	2,952	16	2,677	9	2,791	12	2,844	8	2,655	9
Unknown	2,031	16	2,152	23	2,729	16	3,363	16	3,467	35
Reckless driving	362	5	403	2	403	11	420	12	357	10
Careless/negligent driving	1,770	7	2,006	13	1,990	4	2,048	12	2,145	12
Uncoded & errors	159	0	53	0	87	0	285	1	54	1
<b>Total</b>	<b>80,681</b>	<b>239</b>	<b>77,719</b>	<b>229</b>	<b>85,241</b>	<b>252</b>	<b>85,821</b>	<b>296</b>	<b>84,515</b>	<b>268</b>



The picture above represents all 2018 alcohol-involved fatal crashes in MDOT Region - Grand.

In 2018, there were 1,913 alcohol-involved crashes in MDOT Region - Grand:

- 49 K - Fatal Crashes
- 174 A - Suspected Serious Injury Crashes
- 257 B - Suspected Minor Injury Crashes
- 298 C - Possible Injury Crashes
- 1,135 O - Property Damage Only/No Injury Crashes

## Office of Highway Safety Planning

Physical Address:  
7150 Harris Drive  
Dimondale, Michigan 48821

Mailing Address:  
P.O. Box 30634  
Lansing, Michigan 48909

Phone: (517) 284-3112  
Fax: (517) 284-3151

Find us on the web:  
[MichiganTrafficCrashFacts.org](http://MichiganTrafficCrashFacts.org)

